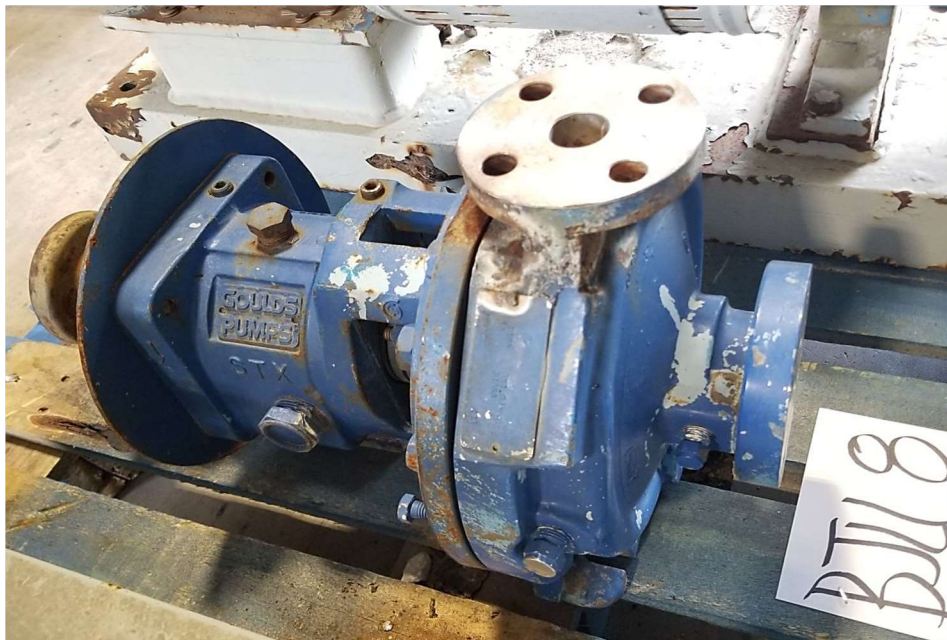
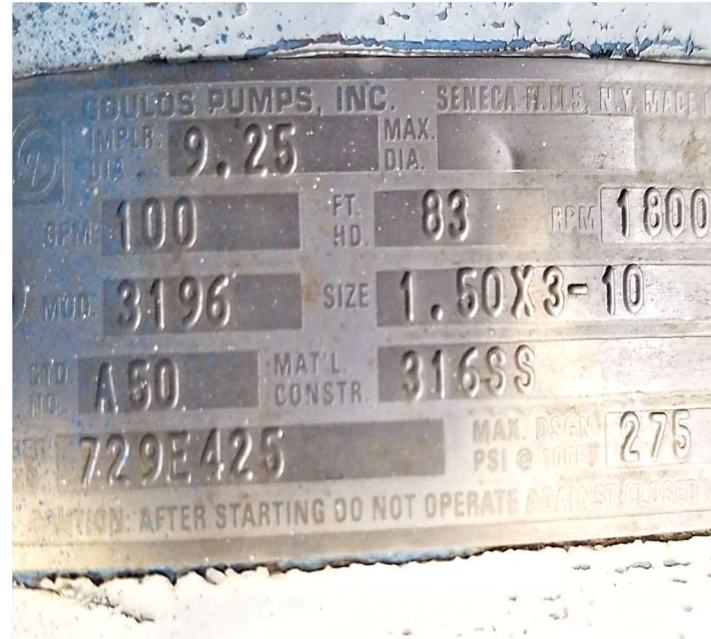
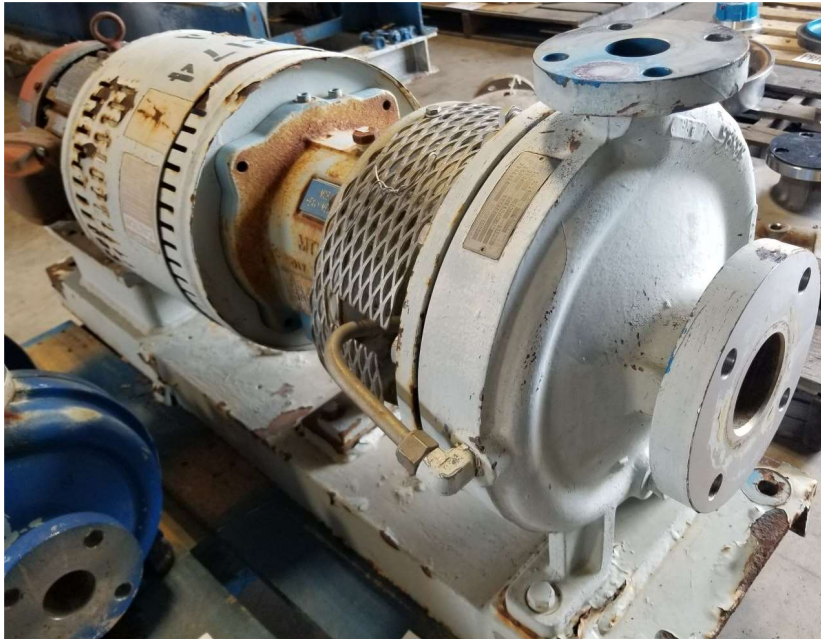


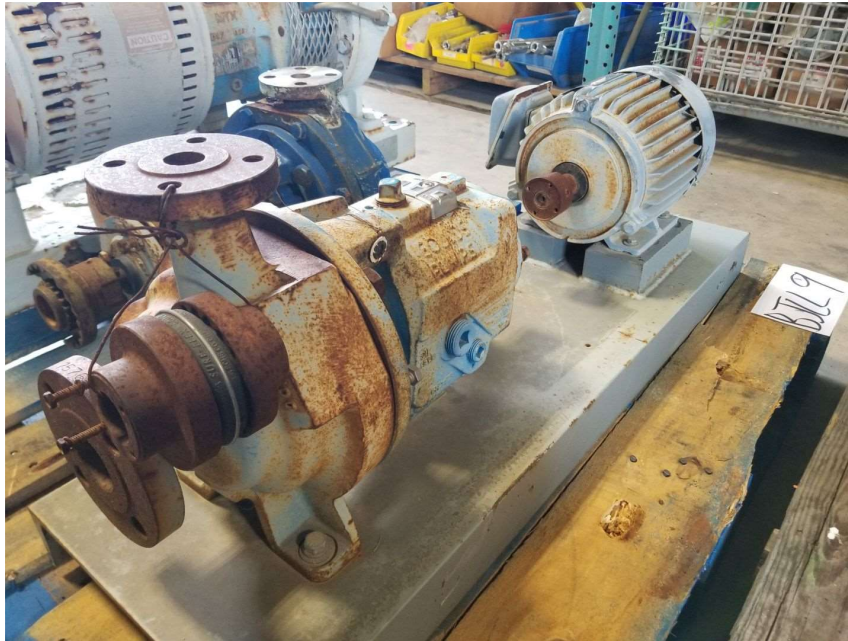
SLE 19-028Pumps & Pump Parts Sale



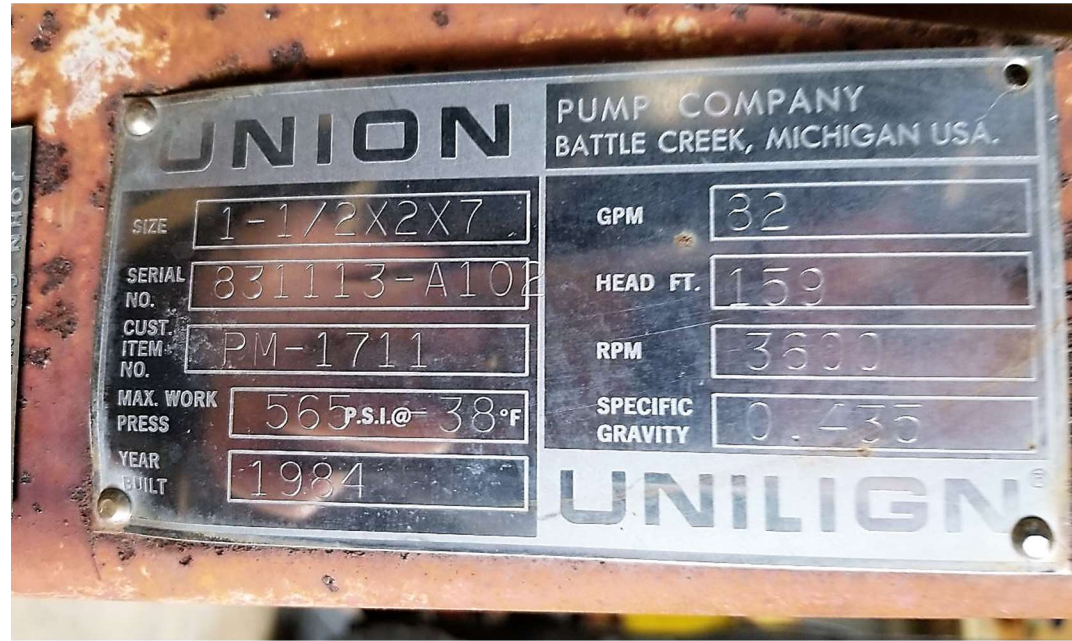
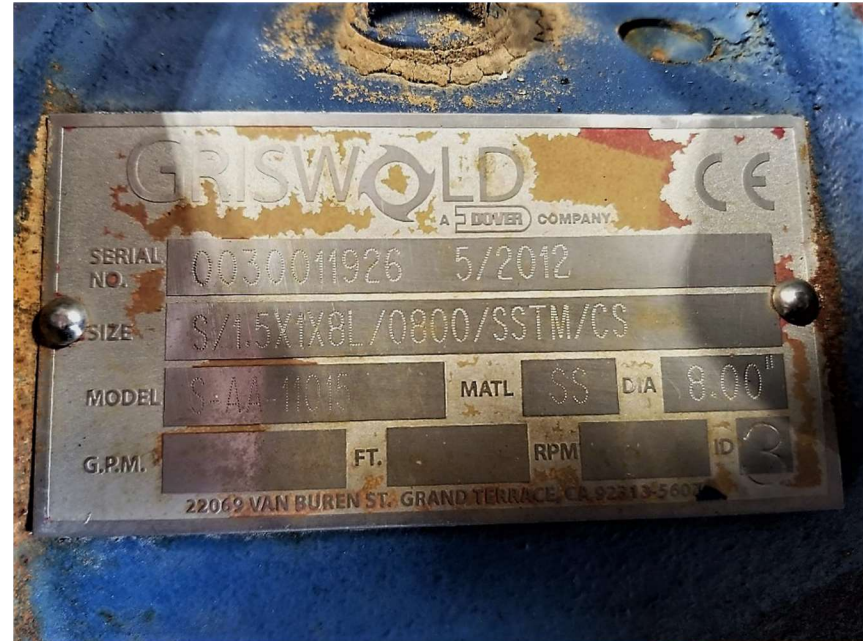
SLE 19-028 Pumps & Pump Parts Sale



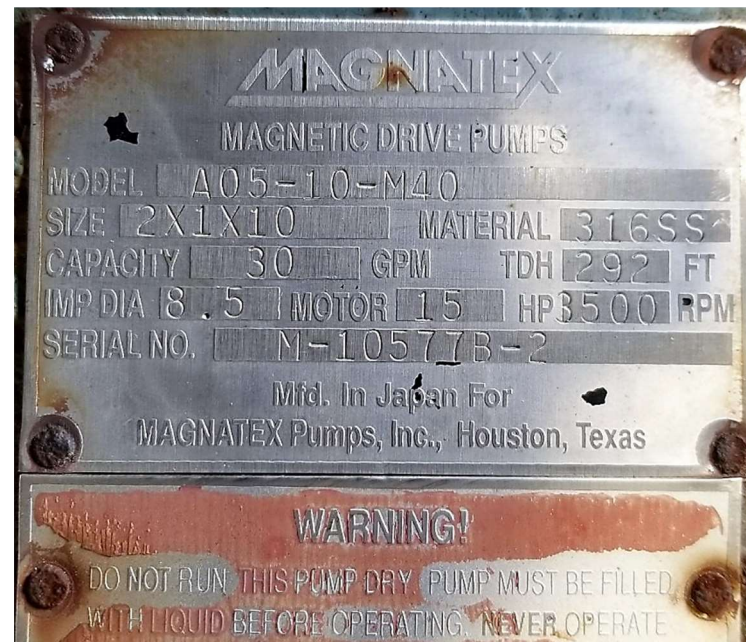
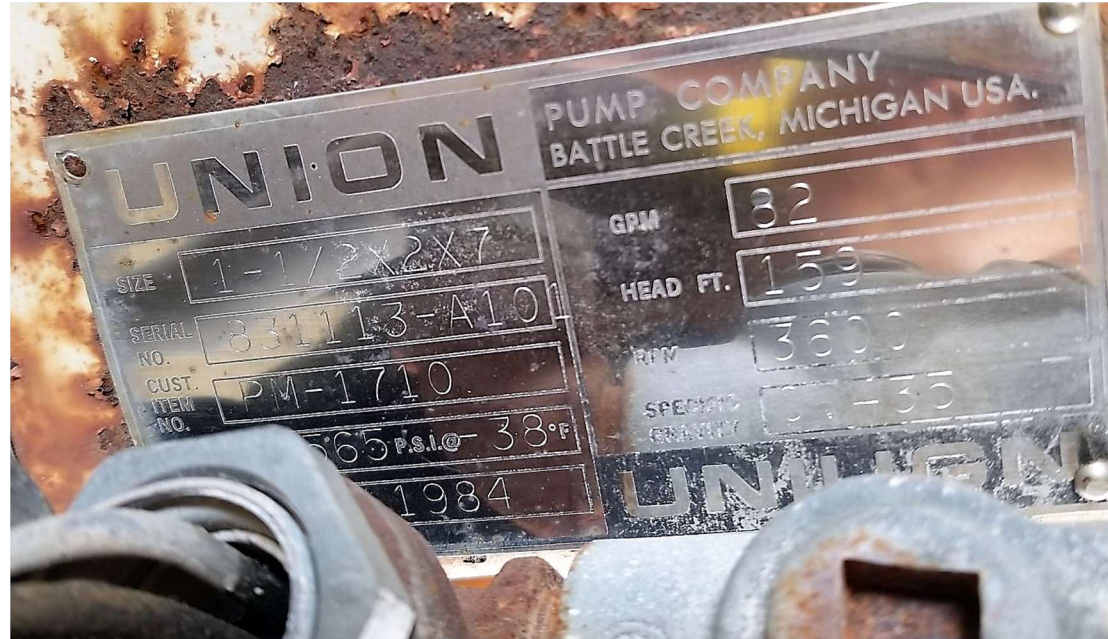
SLE 19-028 Pumps & Pump Parts Sale



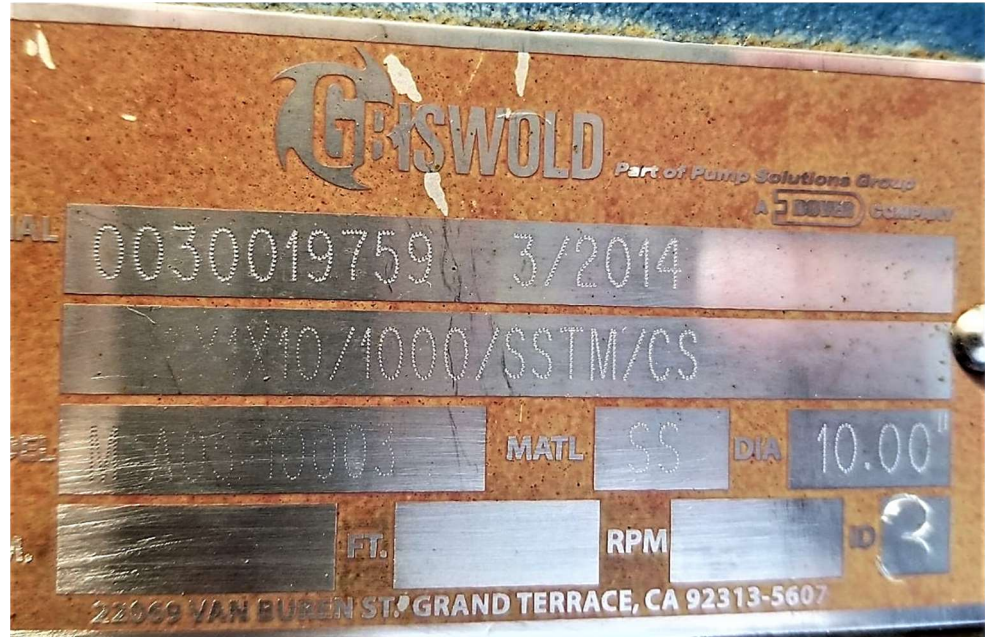
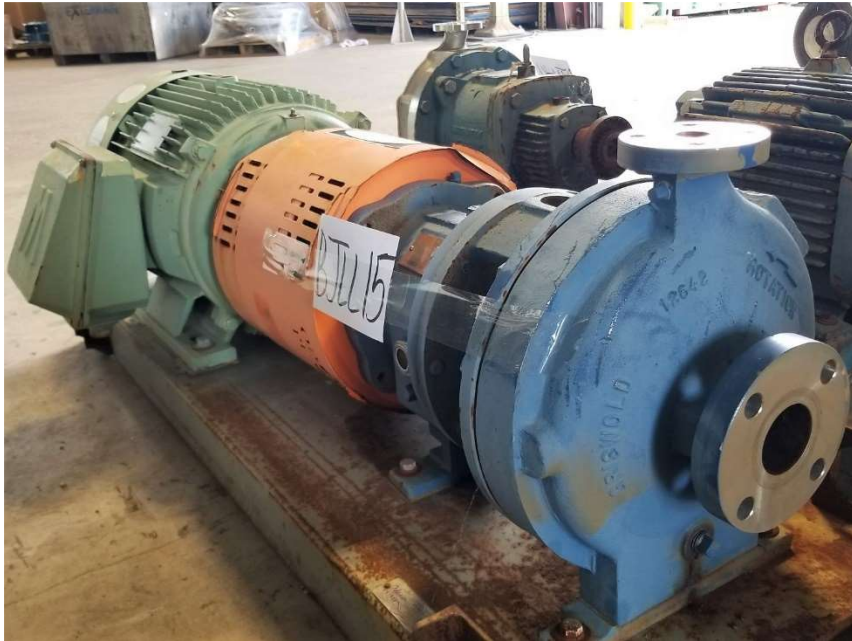
SLE 19-028 Pumps & Pump Parts Sale



SLE 19-028 Pumps & Pump Parts Sale



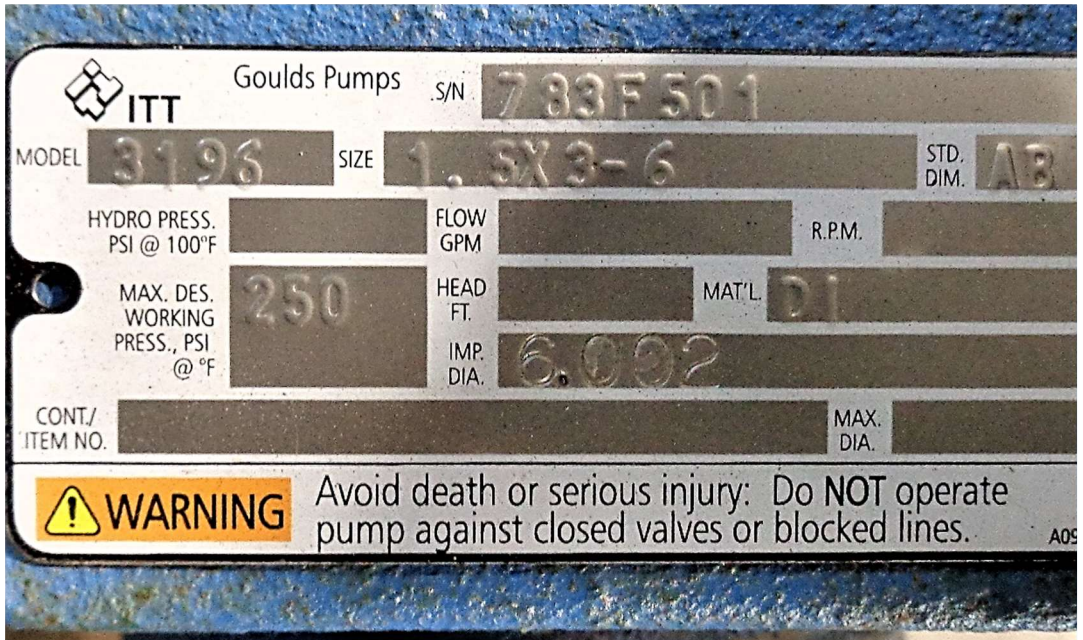
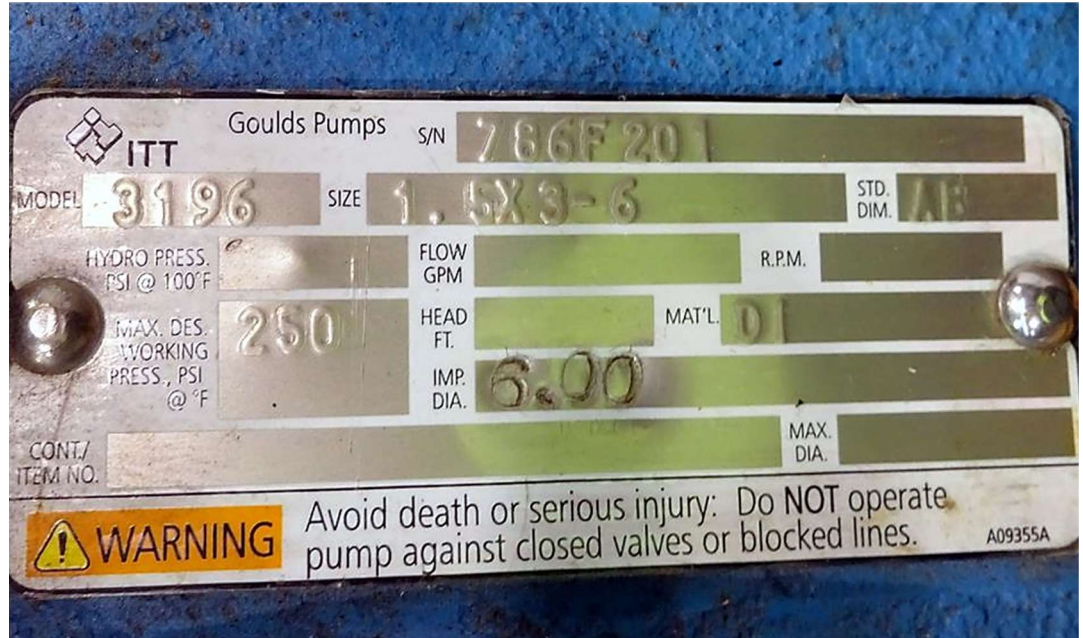
SLE 19-028 Pumps & Pump Parts Sale



SLE 19-028 Pumps & Pump Parts Sale



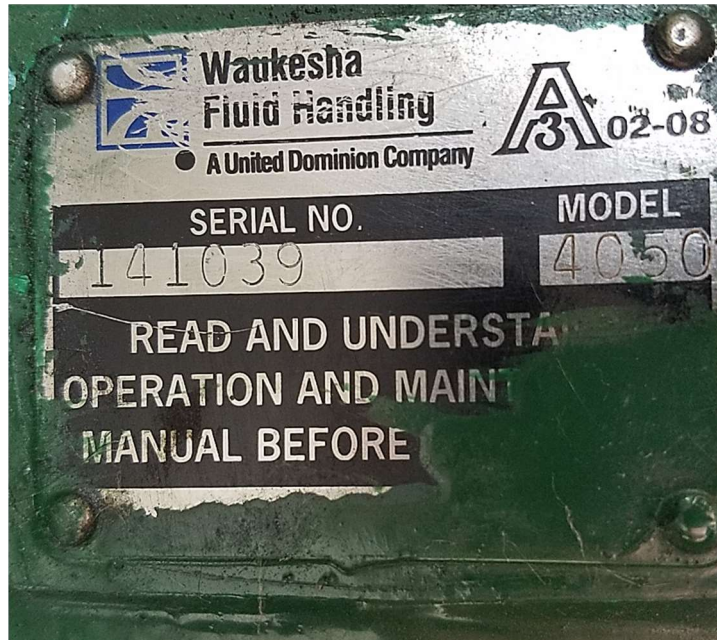
SLE 19-028Pumps & Pump Parts Sale



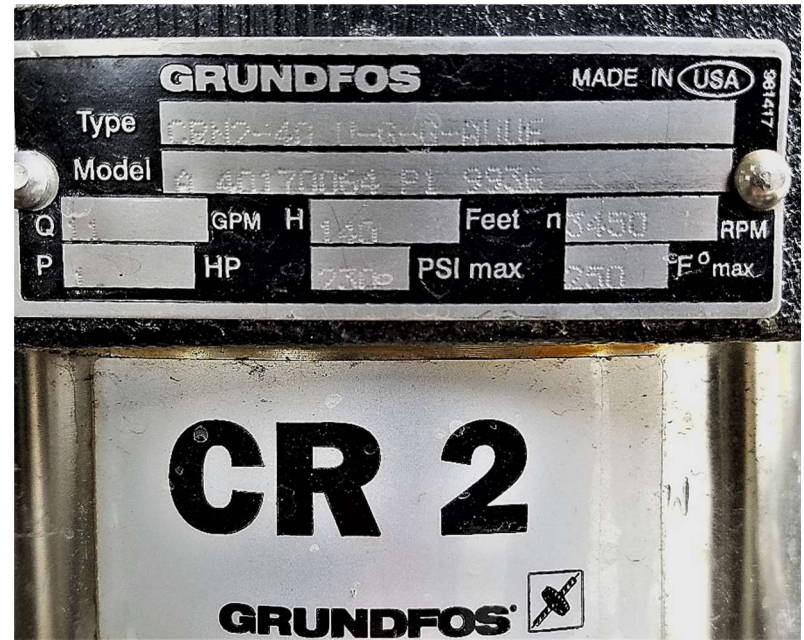
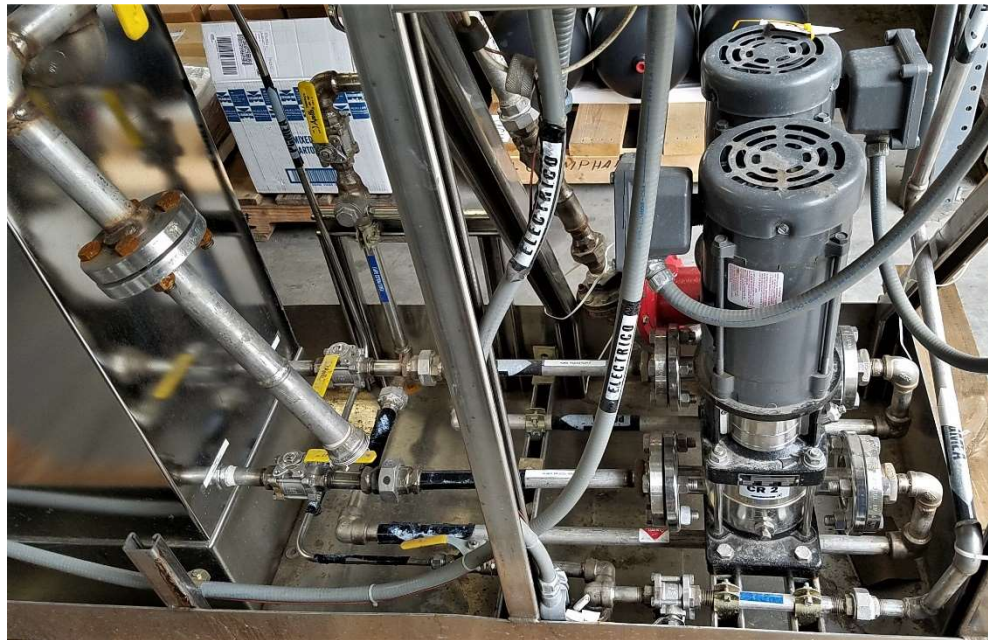
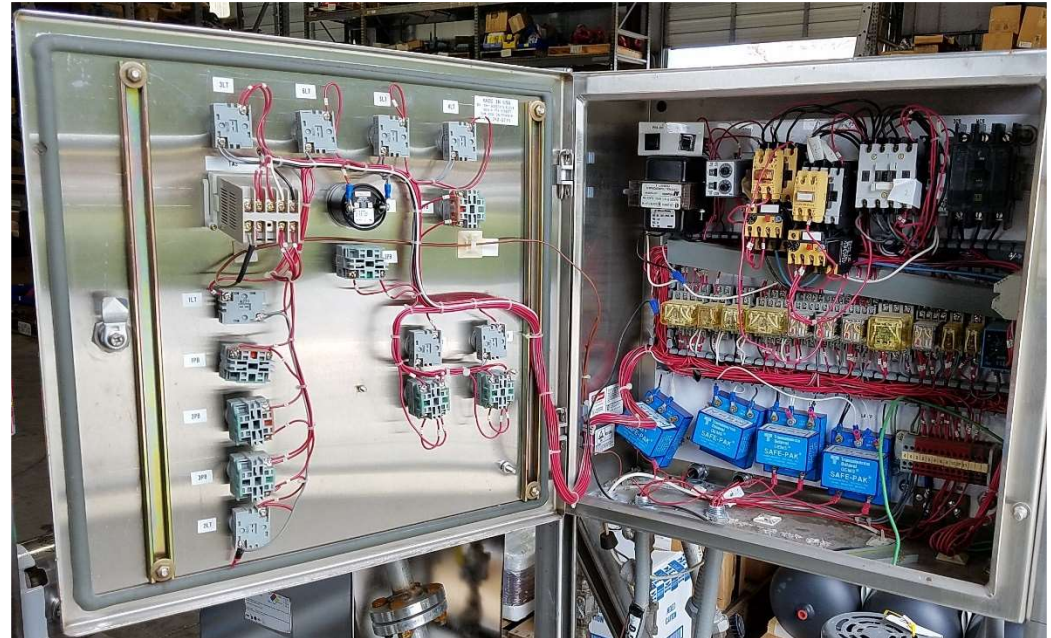
OCC19



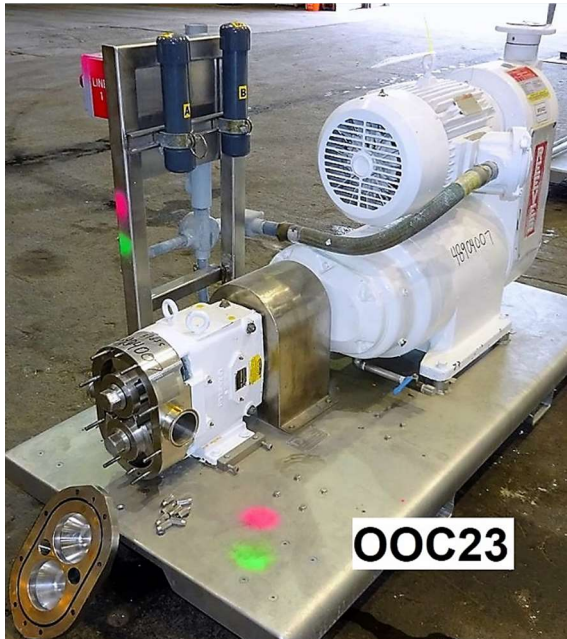
SLE 19-028 Pumps & Pump Parts Sale



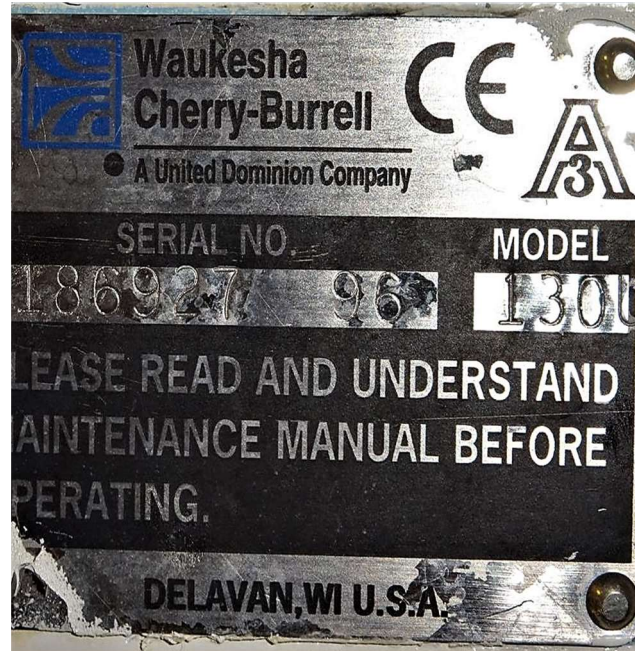
SLE 19-028 Pumps & Pump Parts Sale



SLE 19-028 Pumps & Pump Parts Sale



OOC23



Machine No: M10422 Department: Pressure Packaging
 Machine Name: Waukesha Line Transfer Pump #1
 Location: Mix - Transfer Equipment

LOCK OUT PROCEDURES

Step	Energy Source	Magnitude	Isolation Pt. ID	Lockout Location/Procedure
1	Electrical	480 V	M10422-1	Turn off lockable disconnect located next to the pump.
2	Product	80 psi	M10422-2	Verify hose is disconnected from the pump inlet.
3	Product	80 psi	M10422-3	Verify pipe is disconnected from the filter outlet.

Purpose: To protect AUTHORIZED EMPLOYEES against unexpected or unplanned activation of equipment or energy while servicing equipment.

Shutdown, Lock, Tag and Test Sequence	Restore to Service Sequence
<ol style="list-style-type: none"> 1. Notify affected employees. 2. Review the lockout procedure. 3. Perform machine stop. 4. Isolate energy. 5. Lockout energy. 6. Dissipate energy. 7. Attempt machine startup to verify that all energy sources have been discharged. <p>*If electrical work is needed, test for voltage.</p>	<ol style="list-style-type: none"> 1. Notify affected employees of intent to restore energy. 2. Conduct visual inspection. 3. Verify machine controls are in neutral. 4. Remove lockout and re-energize equipment. 5. Confirm equipment is operating safely.

ALTERNATIVE SAFETY MEASURES (ASM)

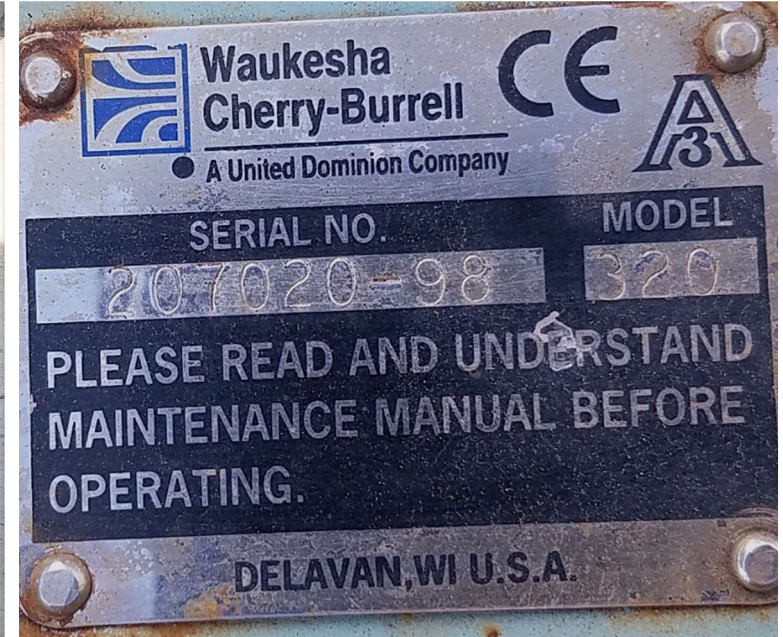
If there are a minimum of 2 ASM's listed below, then the following activities may be conducted using the ASM's: Clearing jams, minor cleaning, minor adjustments or servicing, changeover or setup requiring machine motion.

There are currently NO Alternative Safety Measures. You MUST LOCKOUT.

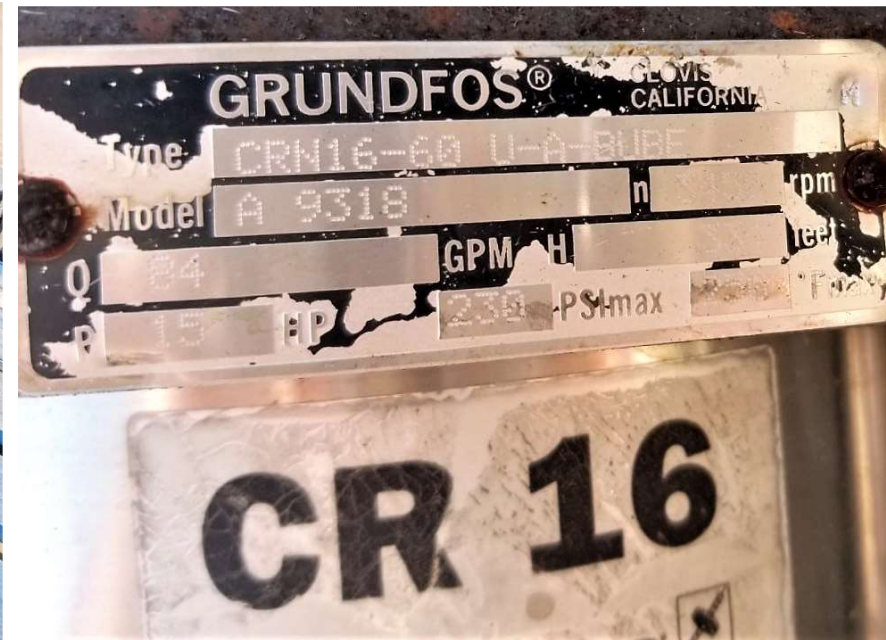
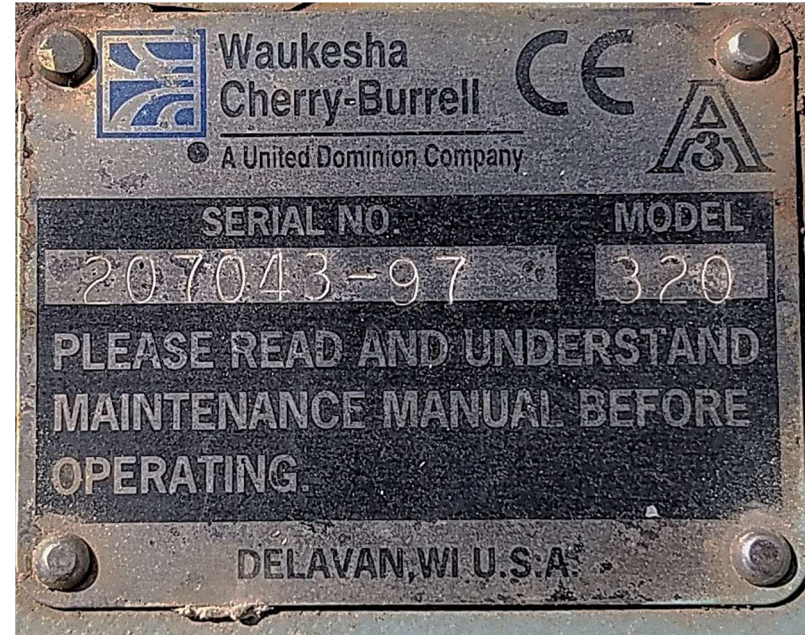
M10422
WAUKESHA PUMP



OCC24



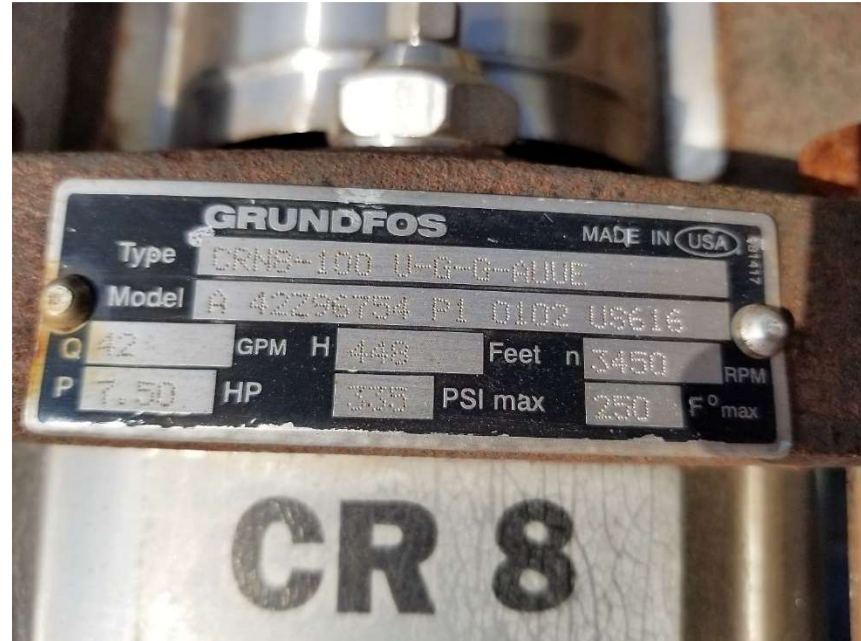
SLE 19-028Pumps & Pump Parts Sale



SLE 19-028 Pumps & Pump Parts Sale



SLE 19-028Pumps & Pump Parts Sale



SLE 19-028 Pumps & Pump Parts Sale



OCC31



OCC32



OCC33

